

Please check the examination details below before entering your candidate information

Candidate surname

Matheson

Other names

Lewis

Centre Number

5 3 6 0 2

Candidate Number

8 7 4 7

Pearson Edexcel Level 3 GCE

Thursday 15 June 2023

Morning (Time: 2 hours 30 minutes)

Paper
reference

9PH0/03

Physics

Advanced

PAPER 3: General and Practical Principles in Physics

ALevelPhysicsOnline.com

You must have:

Scientific calculator, ruler

Total Marks

Instructions

- Use **black** ink or ball-point pen.
- If pencil is used for diagrams/sketches/graphs it must be dark (HB or B).
- **Fill in the boxes** at the top of this page with your name, centre number and candidate number.
- Answer **all** questions.
- Answer the questions in the spaces provided
– *there may be more space than you need.*

Information

- The total mark for this paper is 120.
- The marks for **each** question are shown in brackets
– *use this as a guide as to how much time to spend on each question.*
- In questions marked with an **asterisk** (*), marks will be awarded for your ability to structure your answer logically, showing how the points that you make are related or follow on from each other where appropriate.
- The list of data, formulae and relationships is printed at the end of this booklet.

Advice

- Read each question carefully before you start to answer it.
- Try to answer every question.
- Check your answers if you have time at the end.
- You are advised to show your working in calculations including units where appropriate.

Turn over ►

P71917RA

©2023 Pearson Education Ltd.
N:1/1/1/



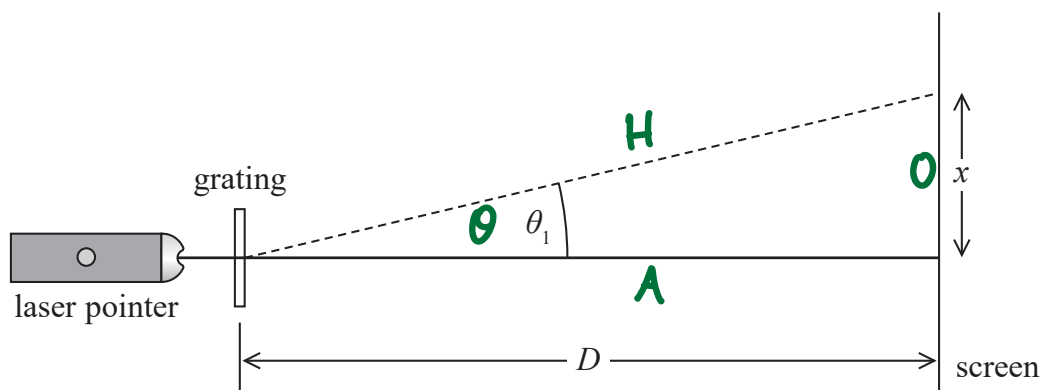
P 7 1 9 1 7 R A 0 1 3 6



Pearson

Answer ALL questions in the spaces provided.

- 1 A student used a laser pointer to direct monochromatic light normal to the plane of a diffraction grating as shown.



A diffraction pattern was produced on the screen. The distance between the first order maximum and the central maximum of the diffraction pattern was x . The distance between the diffraction grating and the screen was D .

- (a) The diffraction grating had 300 lines per mm.
The laser pen was marked with $\lambda = 520 \text{ nm}$.

Determine whether the spacing of the diffraction pattern was consistent with these values.

$$x = 43.5 \text{ cm}$$

$$D = 2.75 \text{ m}$$

$$\tan \theta = \frac{x}{D} \quad \theta = \tan^{-1} \left(\frac{0.435}{2.75} \right) = 8.989^\circ \quad (4)$$

$$n\lambda = d \sin \theta \quad \lambda = \frac{d \sin \theta}{n} = \frac{(1/300 \times 10^3) \sin 8.989}{1}$$

$$\lambda = 5.208 \times 10^{-7} = \underline{521 \times 10^{-9} \text{ m}} \approx 520 \text{ nm marked on the laser pen}$$



(b) The student wrote the following conclusion:

"The value of x was measured with a metre rule. A metre rule has a precision of 0.1 cm, so this value was determined with a high degree of accuracy."

Comment on this conclusion.

(3)

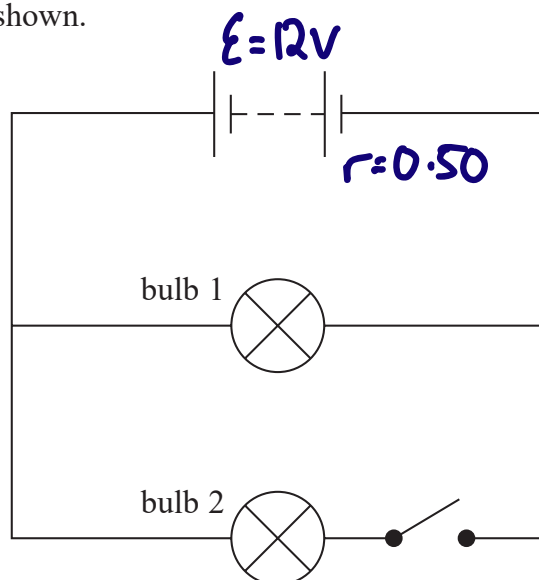
The resolution (not precision) was 0.1 cm. ✓ Precision is a measure of how close together the readings are grouped ✓ and accuracy is how close a value is to the true value. ✓

(Total for Question 1 = 7 marks)



P 7 1 9 1 7 R A 0 3 3 6

- 2 A battery has an e.m.f. of 12 V and an internal resistance of 0.50 Ω . The battery is connected into a circuit, as shown.



Each bulb has a normal working power of 40 W when a potential difference (p.d.) of 12 V is applied.

- (a) Initially the switch is open.

Calculate the terminal p.d. of the battery when bulb 1 is lit. Assume that the resistance of the bulb has its normal working value.

(4)

$$P = \frac{V^2}{R} \quad R = \frac{V^2}{P} = \frac{12^2}{40} = 3.6 \, \Omega \quad \checkmark$$

$$I = \frac{\mathcal{E}}{R + r} = \frac{12}{3.6 + 0.5} = 2.927 \, \text{A} \quad \checkmark$$

$$V = IR = 2.927 \times 3.6 = 10.537 \, \text{V} \quad \checkmark$$

Terminal p.d. of battery = 11 V \checkmark
(to 2 sf)

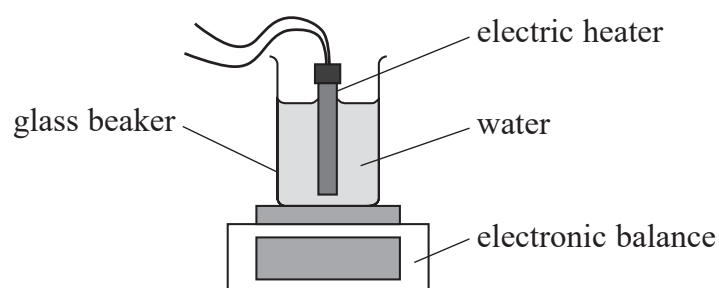
- (b) Explain how the brightness of bulb 1 changes when the switch is closed. No further calculations are necessary.

(3)

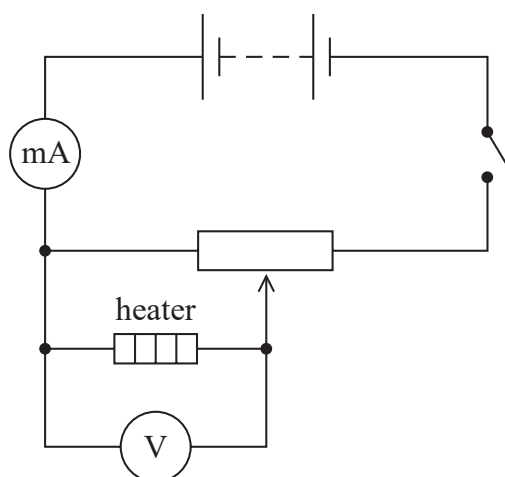
Total resistance decreases so the current from the battery increases. ✓ As $V = \mathcal{E} - Ir$, this greater current results in more 'lost volts' so the terminal p.d. decreases ✓ ∴ brightness of bulb 1 decreases. ✓

(Total for Question 2 = 7 marks)

- 3 The specific latent heat of vaporisation of water can be determined using the apparatus shown.



- (a) A student planned to vary the current in the heater from 0 A to 5 A. The student connected the following circuit to measure the current in the heater.



Criticise the student's circuit.

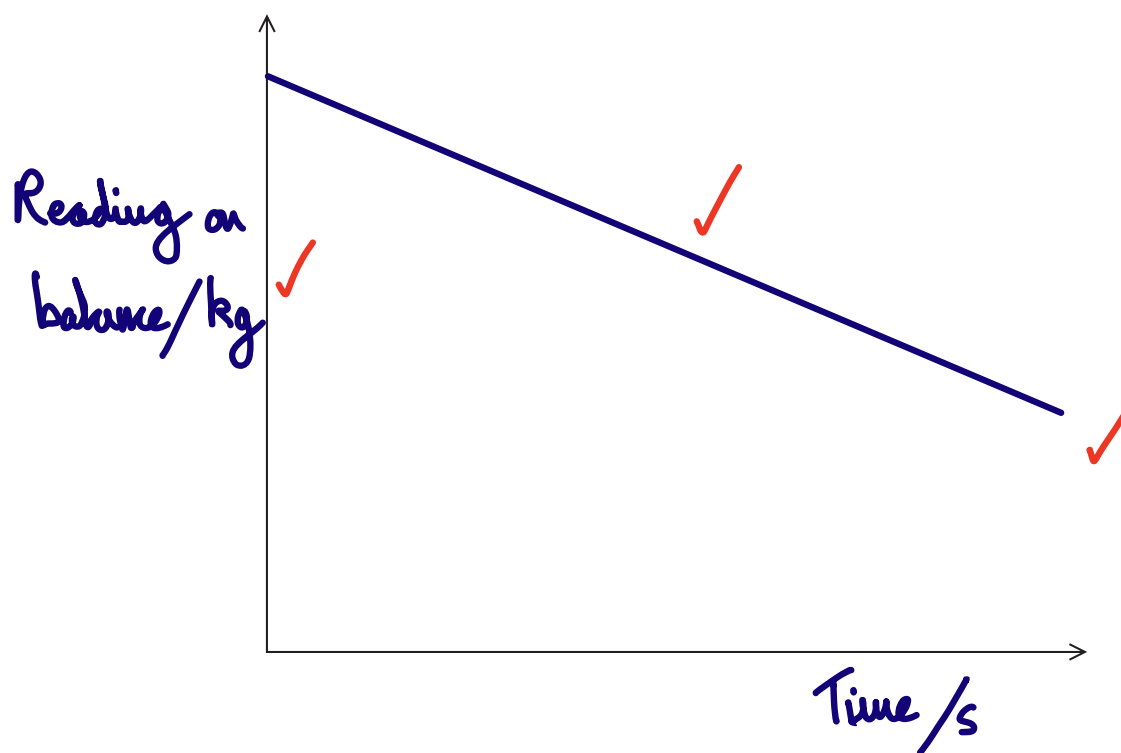
(2)

The ammeter should have been placed in series only with the heater ✓. And the range of the milliammeter is too small to measure up to 5 A. ✓

- (b) (i) The student corrected the circuit and closed the switch. He waited until the water started boiling. He started a stopwatch and recorded the readings on the balance at regular time intervals.

Sketch a graph, on the axes below, of how the readings on the balance would vary with time.

(3)



- (ii) The heater was switched on for 6.0 minutes and the change in mass of water in the beaker was 7.5 g.

Calculate the specific latent heat of vaporisation of water, L .

$$V = 12 \text{ V}$$

$$I = 4.2 \text{ A}$$

$$L_v = \frac{E}{m} \quad \checkmark \quad E = VIt \quad \checkmark \quad L_v = \frac{VIt}{m} = \frac{12 \times 4.2 \times 6.0 \times 60}{0.0075} \quad (3)$$

$$L_v = 2.419 \times 10^6$$

$$L = \underline{2.4 \times 10^6} \text{ J kg}^{-1} \quad \checkmark$$

- (iii) The errors in the experiment include uncertainty in the mass reading and uncertainty in reading the stopwatch, as the water boils.

Explain how another significant source of error affects the value of L obtained from the experiment.

(2)
Energy is transferred to the surroundings, ✓ so the calculated value of L will be larger than the true value. ✓

(Total for Question 3 = 10 marks)

DO NOT WRITE IN THIS AREA

DO NOT WRITE IN THIS AREA

DO NOT WRITE IN THIS AREA



- *4 Alpha particle scattering experiments led Rutherford to propose the nuclear model of the atom. Alpha particles were directed towards a thin gold foil.

Describe how evidence from these experiments supports the nuclear model of the atom.

Most alpha particles are not deflected as they pass through the gold foil. \therefore atoms are mostly empty space. \checkmark Some alpha particles are deflected through small angles \therefore there must be a charged centre \checkmark deflecting the positively charged alpha particles.

A very small number were deflected by more than 90° , \checkmark which means the central nucleus must have the same charge as an alpha particle \checkmark , and be where the mass of the atom is concentrated. \checkmark

(Total for Question 4 = 6 marks)



DO NOT WRITE IN THIS AREA

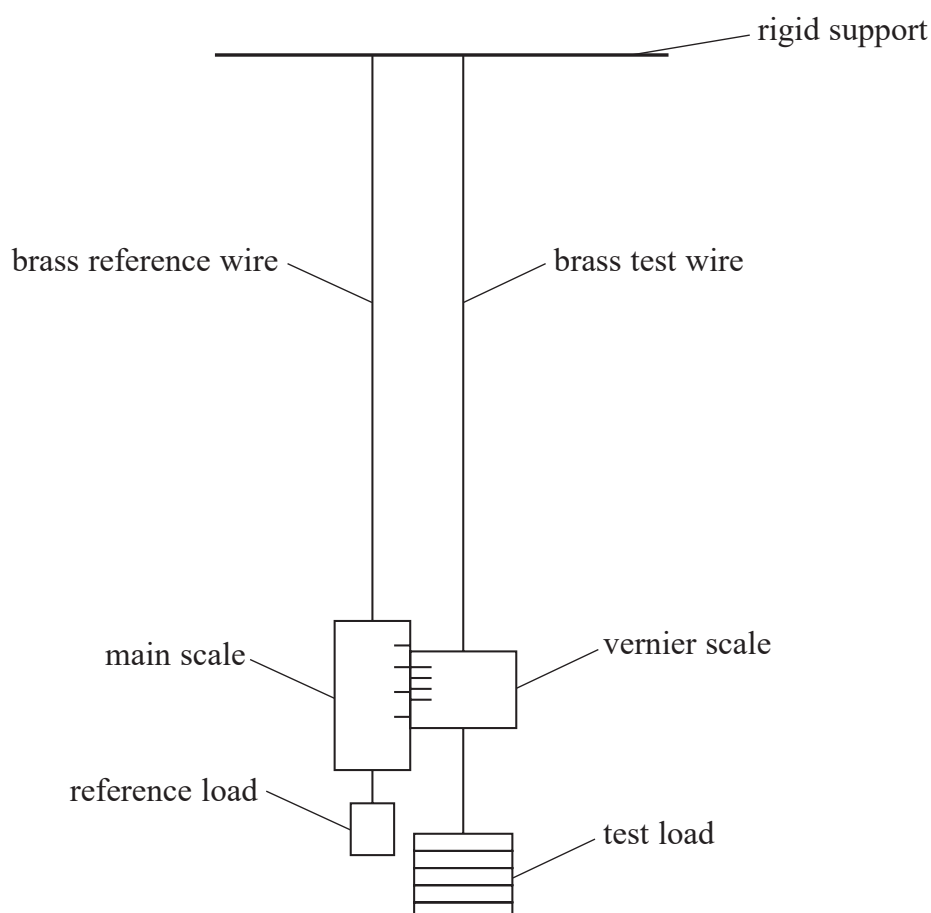
DO NOT WRITE IN THIS AREA

DO NOT WRITE IN THIS AREA

BLANK PAGE



- 5 A student used the apparatus shown to determine the Young modulus of brass. Loads were added to the test wire and corresponding readings taken from the vernier scale. The test wire and the reference wire were identical.



- (a) (i) Give one advantage of using a reference wire as well as a test wire.

(1)

Changes in length due to temperature changes in the surroundings will be the same for both wires. ✓

- (ii) State why a reference load was applied to the reference wire.

(1)

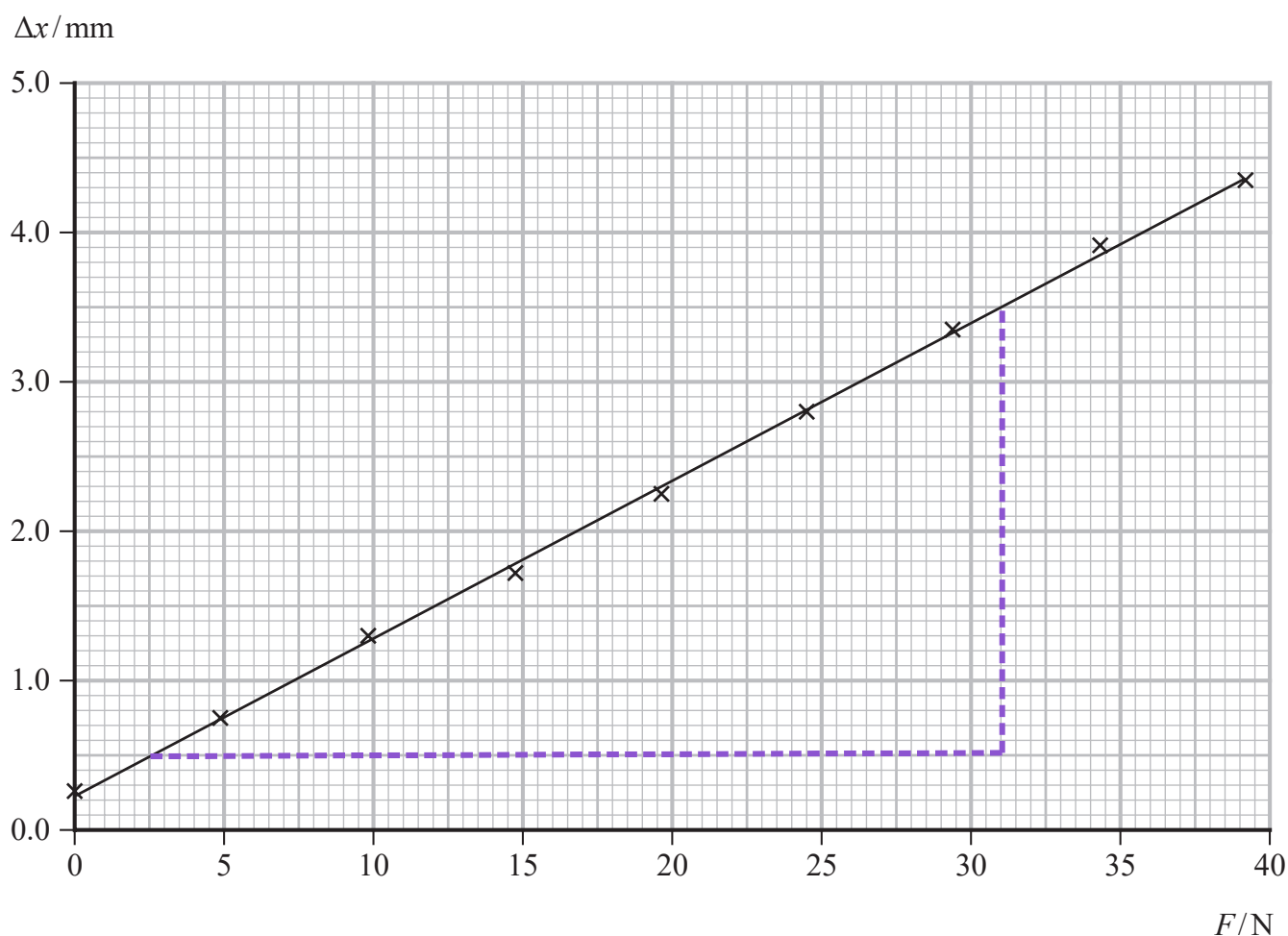
Keeps the wire straight as it is under tension. ✓

(b) Explain why the test wire should be both long and thin.

(3)

The thin wire has a small cross-sectional area, so for an applied force it will experience a large stress ✓ \therefore a large extension. This will also mean that for a given strain ✓, the extension of a long wire will be greater. This means that the percentage uncertainty in the measurement will be less. ✓

(c) The student varied the load F on the test wire and recorded the corresponding change in length Δx from the vernier scale. The results are shown on the graph.



Determine a value for the Young modulus of brass.

length of wire = 2.75 m

diameter of wire = 5.60×10^{-4} m

$$E = \frac{\sigma}{\epsilon} = \frac{Fx}{A \Delta x}$$

$$\text{gradient} = \frac{\Delta x}{F}$$

$$A = \frac{\pi d^2}{4} \quad (5)$$

$$\text{gradient} = \frac{3.5 - 0.5}{31 - 2.5} = 0.105 \text{ mm N}^{-1} \checkmark$$

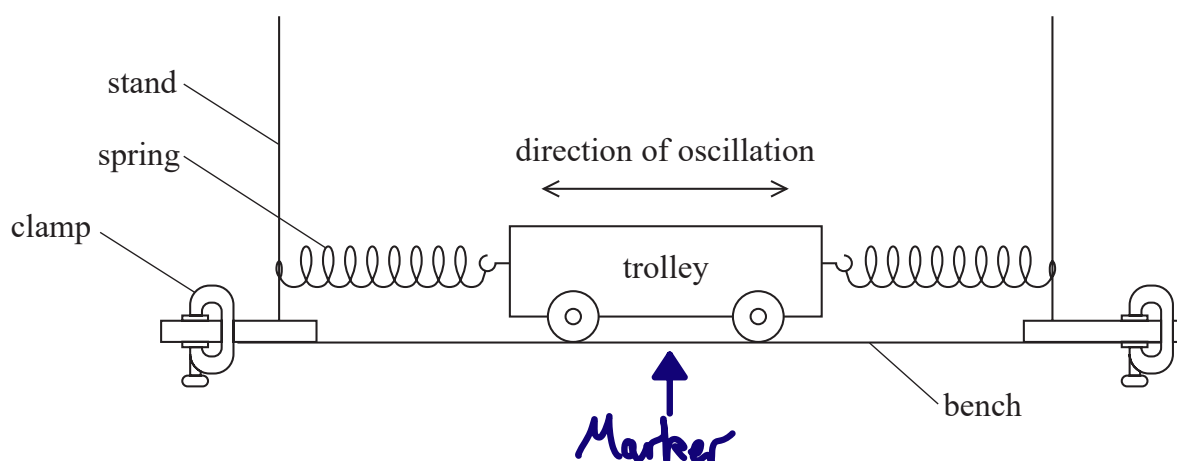
$$E = \frac{4x \checkmark}{\pi d^2 \cdot \text{gradient}} = \frac{4 \times 2.75}{\pi (5.60 \times 10^{-4})^2 \checkmark \times 0.105 \times 10^{-3}} \checkmark$$

$$E = 1.063 \times 10^{11} \text{ Pa}$$

Young modulus of brass = $1.1 \times 10^{11} \text{ Pa}$ \checkmark

(Total for Question 5 = 10 marks)

- 6 A student investigated the horizontal oscillations of a trolley between two springs, using the apparatus shown.



The student displaced the trolley from its equilibrium position. She then released the trolley and started a stopwatch. She stopped the stopwatch when the trolley had completed one oscillation.

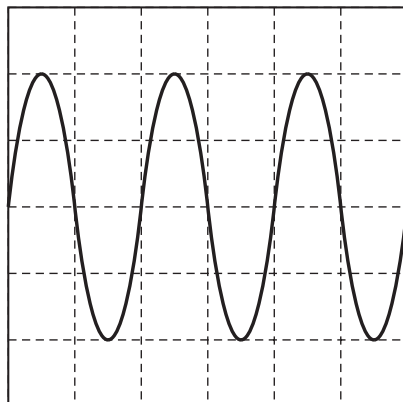
- (a) Describe how the method used by the student could be improved to determine a more accurate value of the time period.

(4)

Time 10 oscillations then divide by 10 to determine the time period. Repeat at least 3 times to calculate the mean. Use a fiducial marker at the midpoint as a point where the stopwatch is started and stopped.

- (b) The student displaced the trolley 6.0 cm from the equilibrium position. She recorded the velocity of the oscillating trolley using a sensor connected to a data logger.

The output from the data logger is shown below.



The time-base of the data logger output was set to 250 ms div^{-1} .

Determine the maximum velocity of the trolley.

(5)

$$T = \frac{6 \text{ squares} \times 250 \text{ ms}}{3 \text{ waves}} = 500 \text{ ms} \checkmark \checkmark$$

$$\omega = \frac{2\pi}{T} = \frac{2\pi}{0.500} = 4\pi \checkmark$$

$$V_{\text{max}} = \omega A \checkmark = 4\pi \times 6.0 \times 10^{-2} = 0.754 \text{ ms}^{-1}$$

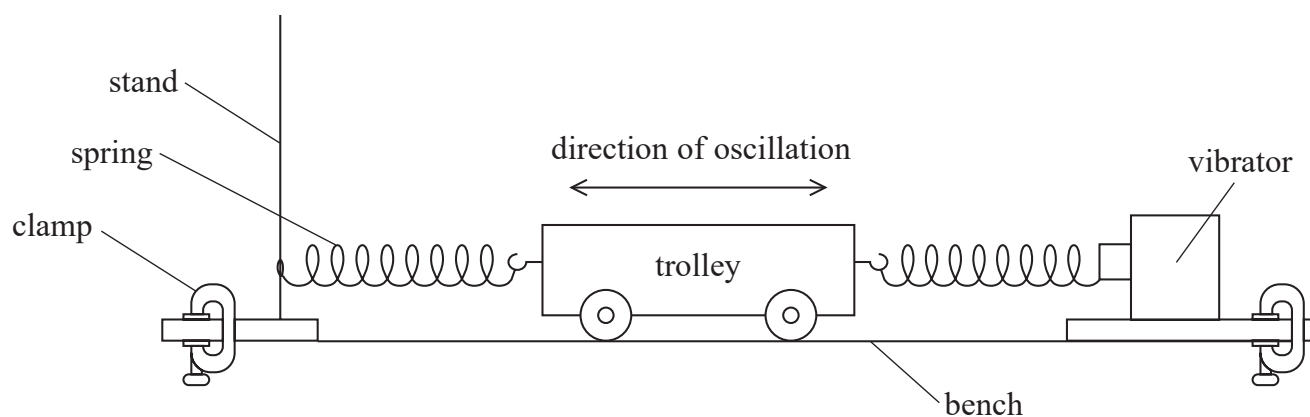
$$v = -Aw \sin \omega t$$

Maximum velocity of trolley = 0.75 $\checkmark \text{ ms}^{-1}$

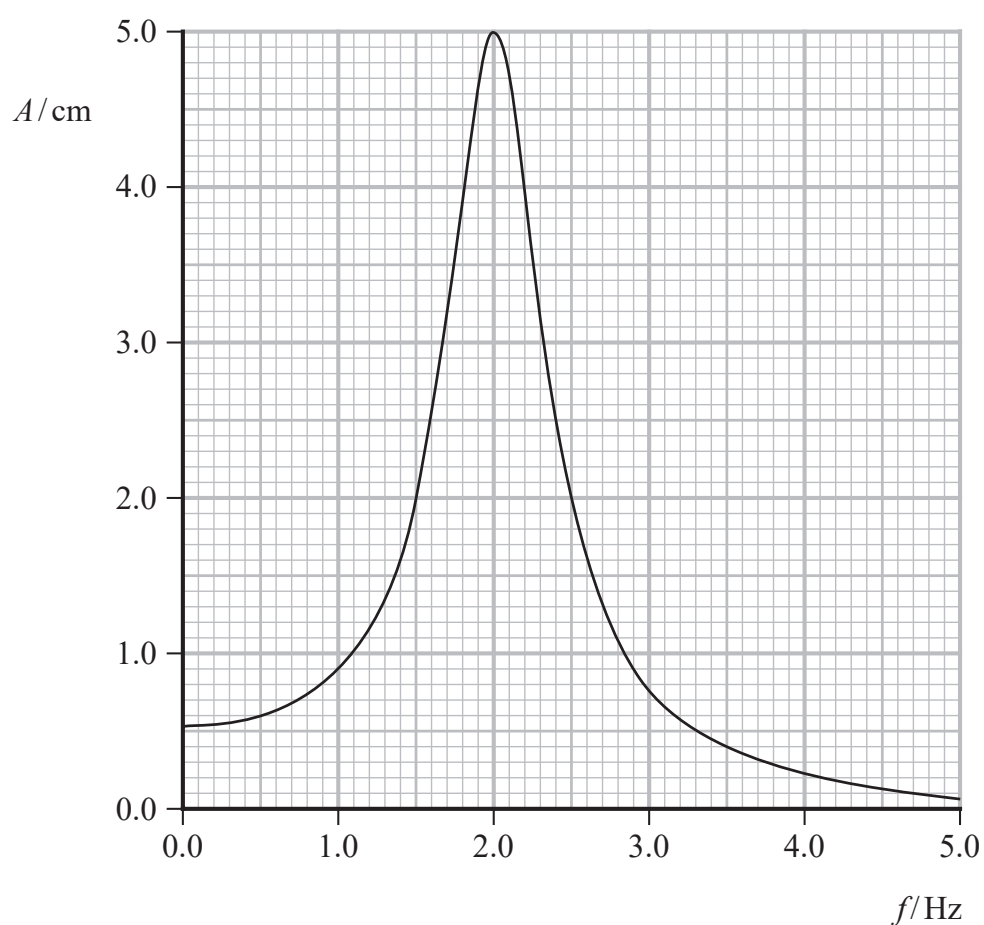


- (c) The student modified the apparatus so that the trolley was driven into oscillation by a vibrator, as shown.

A sensor connected to a data logger recorded the amplitude A of the oscillations.



The graph shows how A varied as the student increased the frequency f of the oscillations.



(i) Explain the shape of the graph.

(4)

As the frequency of the vibrator increases, the amplitude increases to a maximum at 2.0 Hz, which is the natural frequency of the system.

When the driving frequency is equal to the natural frequency resonance occurs, and the transfer of energy is at a maximum. At higher frequencies past 2.0 Hz, the amplitude decreases.

(ii) Determine the effective spring constant k of the oscillating trolley system.

mass of trolley = 0.87 kg

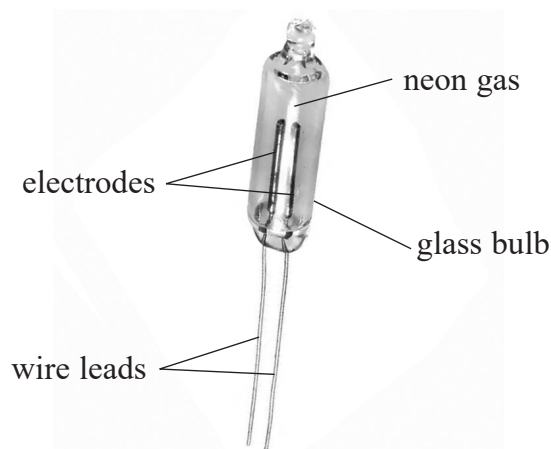
(2)

$$T = 2\pi \sqrt{\frac{m}{k}} \quad k = \frac{4\pi^2 m}{T^2} = \frac{4\pi^2 \times 0.87}{0.500^2} = 137.4 \text{ Nm}^{-1}$$

$$k = 140 \text{ Nm}^{-1}$$

(Total for Question 6 = 15 marks)

7 The neon lamp shown is a glass bulb filled with neon gas at low pressure.



(Source: <https://media.digikey.com/Photos/Visual%20Communications%20Company%20VCC/A1A.JPG>)

*(a) When in use, the neon gas between the electrodes emits electromagnetic radiation.

Explain why this happens when there is an electric current between the electrodes.

(6)
The electric current is due to the movement of electrons ✓ which collide with the neon atoms. ✓

Energy is transferred to the neon atoms ✓ which excites the electrons in the neon into a higher energy state. ✓ When the electrons de-excite ✓ and fall back to a lower energy level, they emit a photon (the EM radiation). ✓

- (b) When light from the neon lamp is incident upon a metal surface, electrons with a maximum speed of $2.68 \times 10^5 \text{ m s}^{-1}$ are emitted from the surface.

The table shows the work functions of some metals.

Metal	Caesium	Potassium	Sodium
Work function / 10^{-19} J	3.36	3.68	3.84

Deduce which metal the light is incident upon.

frequency of light from the neon lamp = $5.56 \times 10^{14} \text{ Hz}$

(4)

$$hf = \phi + \frac{1}{2}mv_{\text{max}}^2$$

$$\phi = hf - \frac{1}{2}mv_{\text{max}}^2 \quad \checkmark$$

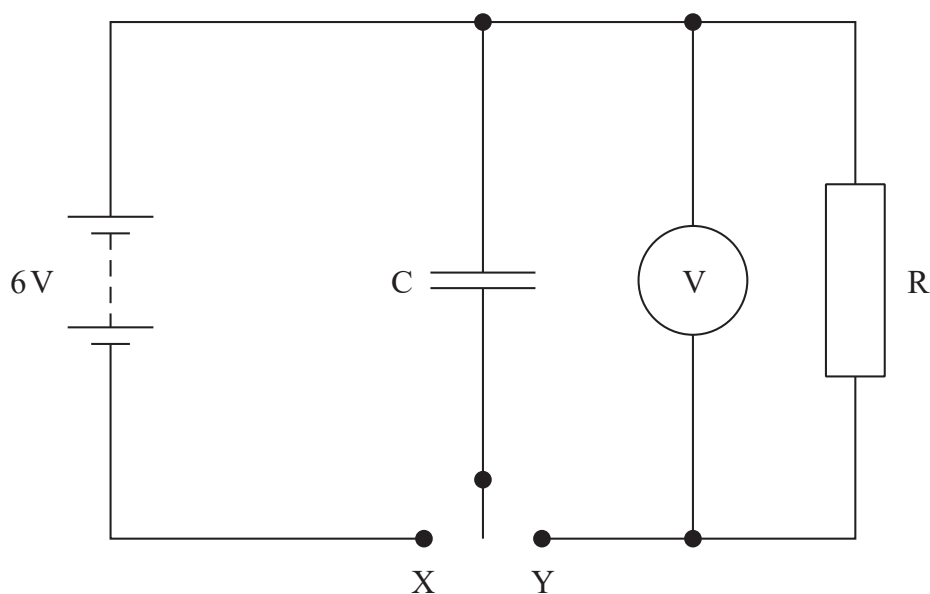
$$\phi = 6.63 \times 10^{-34} \times 5.56 \times 10^{14} - \frac{1}{2} \times 9.11 \times 10^{-31} \times (2.68 \times 10^5)^2 \quad \checkmark$$

$$\phi = \underline{3.359 \times 10^{-19} \text{ J}} \approx 3.36 \times 10^{-19} \text{ J} \therefore \text{Caesium} \quad \checkmark$$

(Total for Question 7 = 10 marks)



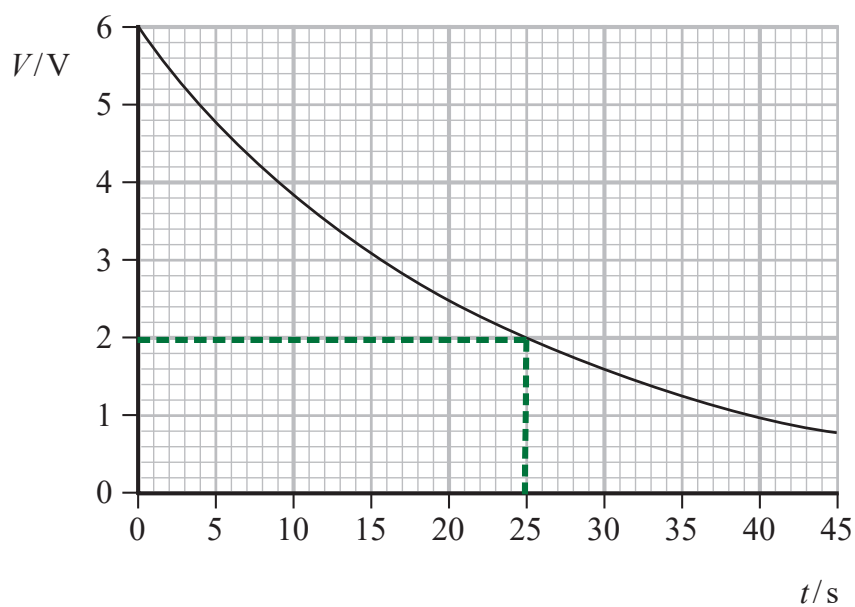
- 8 A student investigated the discharge of a capacitor C through a resistor R using the circuit shown.



The student used the switch to connect C to X to charge the capacitor. She then connected C to Y to discharge the capacitor through R .

As the capacitor discharged, she recorded values of the potential difference V across C and corresponding values of time t . She used a stopwatch to measure t .

The student used her results to plot the following graph.



- (a) The capacitor was marked $220\mu\text{F} \pm 20\%$.

Deduce whether the student's data give a value of capacitance within the stated range.

$$R = 82\text{ k}\Omega$$

$$V = V_0 e^{\frac{-t}{RC}} \quad \ln \frac{V}{V_0} = \frac{-t}{RC} \quad \ln \frac{V_0}{V} = \frac{t}{RC} \quad (5) \checkmark$$

$$C = \frac{t}{R \ln(V_0/V)} = \frac{25 \checkmark}{82 \times 10^3 \times \ln(6.0/2.0)}$$

$$C = 2.775 \times 10^{-4} \text{ F} = \underline{277.5 \mu\text{F}} \checkmark$$

$$220 \times 1.20 = 264 \mu\text{F} \checkmark \therefore \text{not within range} \checkmark$$

- (b) The student suggested that her results would have been more accurate if she had used a data logger to record the data.

Assess the student's suggestion.

(3)

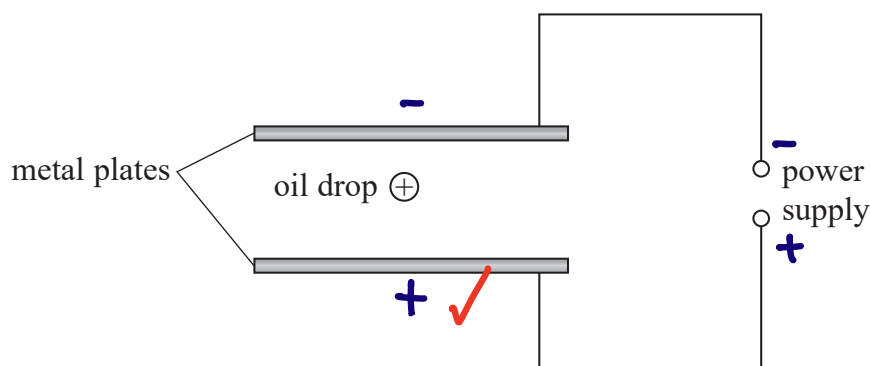
Data needs to be collected in a short time, \checkmark
and it is difficult to read the stopwatch and
voltmeter simultaneously $\checkmark \therefore$ the suggestion is
correct. \checkmark

(Total for Question 8 = 8 marks)



- 9 A student investigated the behaviour of small, positively charged oil drops in an electric field.

He introduced an oil drop between two horizontal metal plates. A potential difference V was applied to bring the oil drop to rest as shown.



- (a) (i) Add to the diagram to show the polarity of the power supply when the oil drop is at rest.

(1)

- (ii) The oil drop was at rest when $V = 4870 \text{ V}$.

The student expected the charge on the oil drop to be a whole number multiple of the charge on an electron.

Deduce whether this is confirmed by the experimental data.

distance between top plate and bottom plate = 1.55 cm

density of oil = 920 kg m^{-3}

radius of the oil drop = $1.78 \times 10^{-6} \text{ m}$

(6)

$$F_e = F_g \quad qE = mg \quad \checkmark \quad E = \frac{V}{d} \quad \checkmark \quad \frac{qV}{d} = mg$$

$$\rho = m/V \quad \checkmark \quad m = \rho V = \rho \frac{4}{3} \pi r^3 \quad \checkmark$$

$$\frac{qV}{d} = \rho \frac{4}{3} \pi r^3 g \quad q = \frac{4\rho \pi r^3 g d}{3V}$$

$$q = \frac{4 \times 920 \times \pi \times (1.78 \times 10^{-6})^3 \times 9.81 \times 1.55 \times 10^{-2}}{3 \times 4870}$$

$$q = 6.7859 \times 10^{-19} \text{ C}$$

$$q/e = n \quad \checkmark \quad 6.7859 \times 10^{-19} / 1.60 \times 10^{-19} = 4.24 \quad \checkmark$$

Not an integer \therefore student's expectation not supported by data

- (b) The student determined the terminal velocity of the oil drop in order to obtain a value for the weight of the oil drop.

He disconnected the power supply and the oil drop fell downwards. He viewed the oil drop through a microscope.

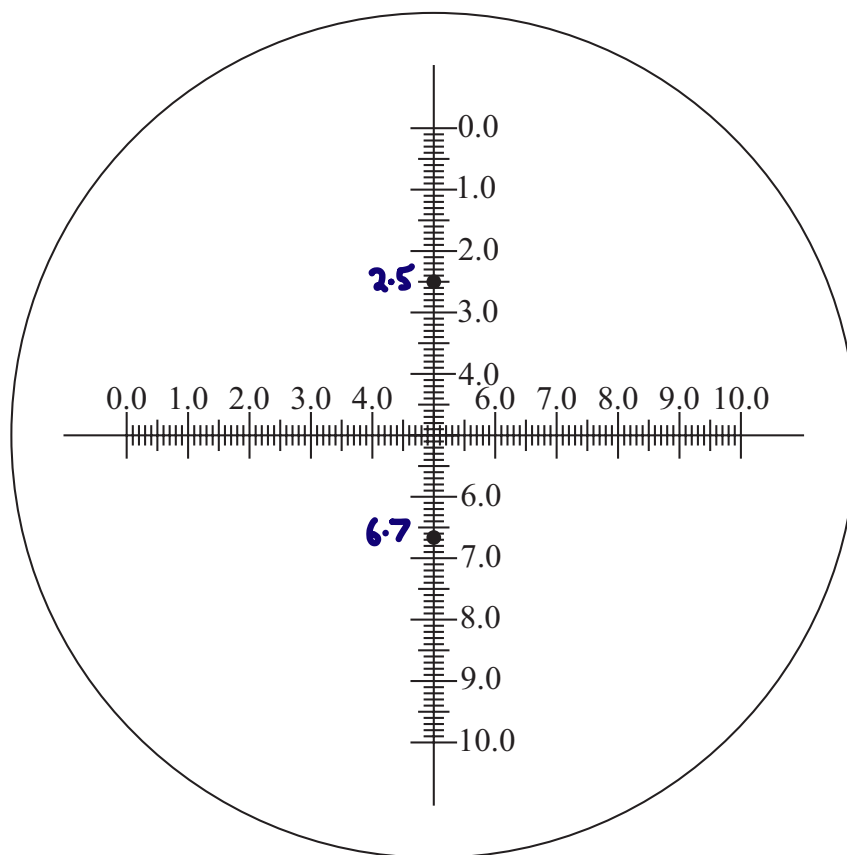
- (i) Explain why the student should wait a short while before starting to take measurements.

(2)

The oil drop is initially at rest, so it takes a short time to accelerate to its terminal velocity. ✓
If the timer was started too soon, the value of v would be too low. ✓



(ii) The view through the microscope is shown below. The scale is in millimetres.



The position of the oil drop at the start and end of a 120 s time interval is indicated by the black dots.

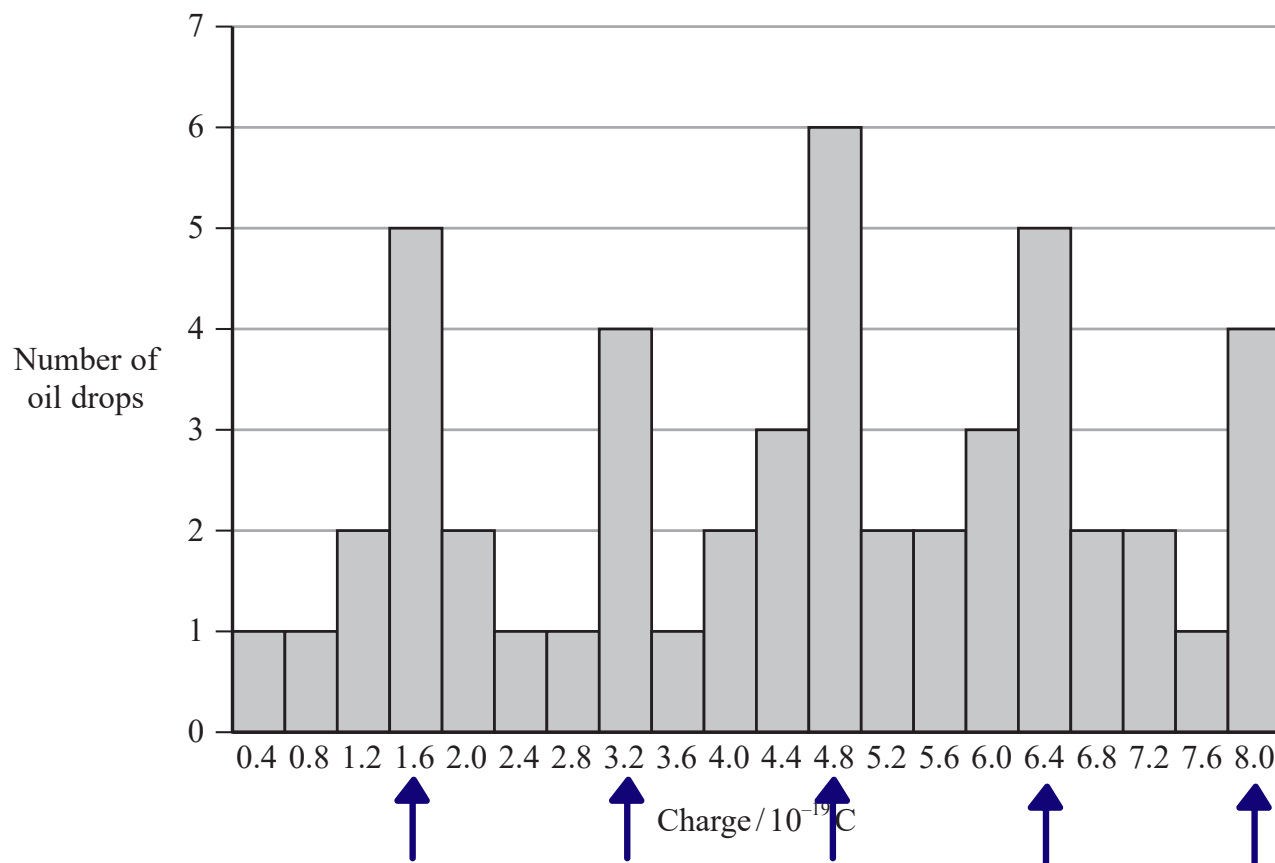
Determine the terminal velocity of the oil drop.

$$v = \frac{s}{t} = \frac{(6.7 - 2.5) \times 10^{-3}}{120} = 3.5 \times 10^{-5} \text{ m s}^{-1} \quad (3)$$

Terminal velocity = $3.5 \times 10^{-5} \text{ m s}^{-1}$

- (c) The student repeated the measurements on fifty oil drops. For each drop the student calculated the charge on the oil drop.

His results are shown in the bar chart.



The student predicted that the charge on each oil drop would be a whole number multiple of the charge on an electron.

Comment on the extent to which the bar chart supports the student's prediction.

(3)

24 of the 50 results were a multiple of $1.6 \times 10^{-19} \text{ C}$, but more than 50% were not, so the data is inconclusive.

(Total for Question 9 = 15 marks)

DO NOT WRITE IN THIS AREA

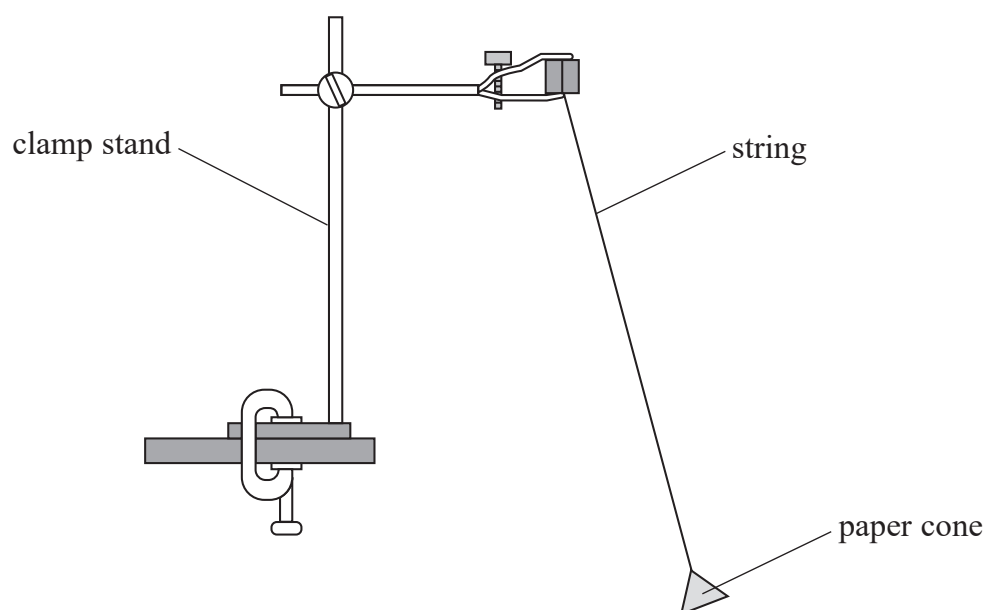
DO NOT WRITE IN THIS AREA

DO NOT WRITE IN THIS AREA

BLANK PAGE



- 10 A student made a simple pendulum by connecting a paper cone to a piece of string. She attached the pendulum to a clamp as shown.



- (a) (i) The student displaced the pendulum through a small angle so that it oscillated. She determined the time period T as 2.50 s.

Calculate the length of the pendulum.

$$T = 2\pi \sqrt{\frac{L}{g}} \quad \checkmark \quad L = \frac{gT^2}{4\pi^2} = \frac{9.81 \times 2.50^2}{4 \times \pi^2} = 1.553 \quad (2)$$

Length of pendulum = 1.55 ✓ m

- (ii) Explain why the amplitude of oscillation of the pendulum did not stay constant. (3)

Air resistance acts on the moving pendulum ✓
and work is done against this force ✓ ∴ the
energy stored by the pendulum decreases so
its amplitude decreases. ✓

(b) The student recorded how the amplitude of oscillation varied over time.

(i) It is suggested that the relationship between amplitude A and time t is

$$A = A_0 e^{-\frac{kt}{T}}$$

where A_0 is the initial amplitude of the oscillation and k is a constant.

Explain why a graph of $\ln A$ against t would give a straight line.

$$\ln A = \ln A_0 - \frac{kt}{T} \quad \ln A = -\frac{k}{T}t + \ln A_0 \quad (2) \quad \checkmark$$

$$y = mx + c$$

Gradient = $-k/T$ which is constant \therefore straight line. \checkmark

(ii) The table shows the student's data.

t/s	A/cm	$\ln(A/cm)$
2.5	17.6	2.868
5.0	14.3	2.660
7.5	11.6	2.451
10.0	9.4	2.241
12.5	7.6	2.028 \checkmark

Plot a graph of $\ln A$ against t on the grid opposite. Use the additional column to show your processed data.

(5)

(iii) Determine values for A_0 and k .

$$\text{Gradient} = \frac{2.00 - 3.07}{13.0 - 0} = -0.084 \text{ s}^{-1} = -\frac{k}{T} \quad (4)$$

$$k = T \times 0.084 = 2.50 \times 0.084 = 0.21 \text{ (no units)}$$

$$\ln A_0 = y\text{-intercept} = 3.07 \quad A_0 = e^{3.07} = 21.54 \quad \checkmark$$

$$A_0 = 21.5 \text{ cm} \quad \checkmark$$

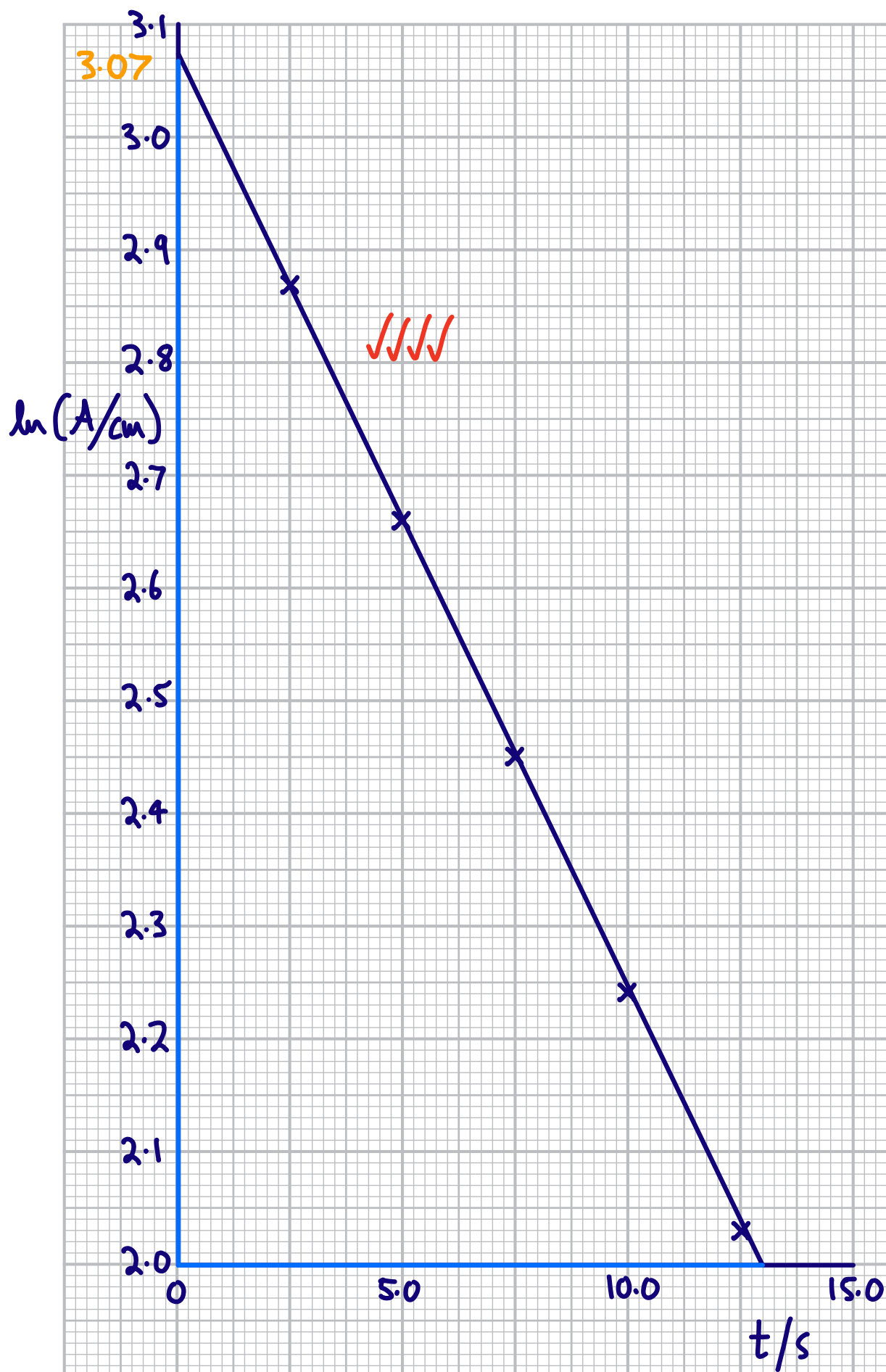
$$k = 0.21 \quad \checkmark$$



DO NOT WRITE IN THIS AREA

DO NOT WRITE IN THIS AREA

DO NOT WRITE IN THIS AREA



(Total for Question 10 = 16 marks)

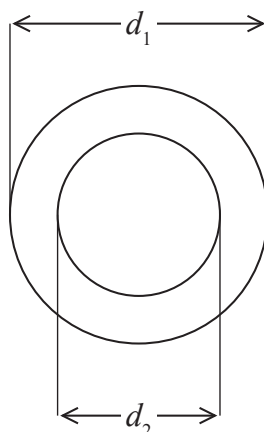


- 11 The photograph shows some metal washers. A student carried out an experiment to determine the density of the metal the washers are made from.



(Source: © NJH Photography/Shutterstock)

Each washer has a diameter d_1 of about 4.5 cm. The internal diameter d_2 of each washer is about 2.5 cm. Each washer has a thickness t of about 4 mm.



- (a) The student used a half metre rule to make measurements of a washer.

Comment on the student's choice of measuring instrument.

(3)

The resolution of the metre ruler is $\pm 1 \text{ mm}$ which is not suitable ✓, as the percentage uncertainties are too high. ✓ A vernier caliper, with a resolution of 0.1 mm , would be much more suitable. ✓

- (b) The student measured t for each of the five washers and then calculated a mean value.

Explain how the student could modify her method to obtain a more accurate mean value for t .

(3)

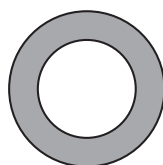
She could have stacked them together ✓, this would increase the measured distance ✓ and would therefore reduce the percentage uncertainty. ✓

- (c) The student obtained the following mean values.

$$d_1 = 4.52 \text{ cm} \pm 0.02 \text{ cm}$$

$$d_2 = 2.53 \text{ cm} \pm 0.02 \text{ cm}$$

She calculated the area A of a washer indicated by the shaded section below.



She used the formula $A = \frac{\pi}{4}(d_1 + d_2)(d_1 - d_2)$

- (i) Show that the percentage uncertainty in her value for the area of a washer is about 3%.

(4)

$$\% U_{(d_1 + d_2)} = \frac{0.02 + 0.02}{4.52 + 2.53} \times 100 = 0.567\% \checkmark$$

$$\% U_{(d_1 - d_2)} = \frac{0.02 + 0.02}{4.52 - 2.53} \times 100 = 2.01\% \checkmark$$

$$\begin{aligned} \% U_A &= \% U_{(d_1 + d_2)} + \% U_{(d_1 - d_2)} \checkmark = 0.567 + 2.01 \\ &= 2.58\% \checkmark \approx 3\% \end{aligned}$$

(ii) The student obtained the following values of t for each of the five washers.

t/mm	4.3	4.2	4.1	3.9	4.0
---------------	-----	-----	-----	-----	-----

The table shows the density of iron and steel.

Metal	Iron	Steel
Density/ g cm^{-3}	6.9	7.9

Deduce whether the washers are made from iron or steel.

mean mass of a washer = 32.0 g

The uncertainty in the mass is negligible.

$$t_{\text{mean}} = (4.3 + 4.2 + 4.1 + 3.9 + 4.0) \div 5 = 4.1 \text{ mm} \checkmark \quad (6)$$

$$V = At = \frac{\pi}{4} (d_1 + d_2)(d_1 - d_2)t$$

$$V = \frac{\pi}{4} (4.52 + 2.53)(4.52 - 2.53) \times 4.1 \times 10^{-1}$$

$$V = 4.518 \text{ cm}^3 \checkmark$$

$$\rho = \frac{m}{V} = \frac{32}{4.518} = 7.083 \text{ g cm}^{-3} \checkmark$$

$$\%U_t = \frac{\frac{1}{2} \text{ range}}{\text{mean}} \times 100 = \frac{(4.3 - 3.9)/2}{4.1} \times 100 = 4.88\%$$

$$\%U_\rho = \%U_A + \%U_t = 2.58 + 4.88 = 7.46\% \checkmark$$

(Total for Question 11 = 16 marks)

TOTAL FOR PAPER = 120 MARKS

$$7.083 \times 0.0746 = 0.528$$

$$\rho = \underline{7.08} \pm \underline{0.53} \text{ g cm}^{-3} \therefore \text{must be iron, which is in this range.} \checkmark$$



List of data, formulae and relationships

Acceleration of free fall	$g = 9.81 \text{ m s}^{-2}$	(close to Earth's surface)
Boltzmann constant	$k = 1.38 \times 10^{-23} \text{ J K}^{-1}$	
Coulomb law constant	$k = \frac{1}{4\pi\epsilon_0} = 8.99 \times 10^9 \text{ N m}^2 \text{ C}^{-2}$	
Electron charge	$e = -1.60 \times 10^{-19} \text{ C}$	
Electron mass	$m_e = 9.11 \times 10^{-31} \text{ kg}$	
Electronvolt	$1 \text{ eV} = 1.60 \times 10^{-19} \text{ J}$	
Gravitational constant	$G = 6.67 \times 10^{-11} \text{ N m}^2 \text{ kg}^{-2}$	
Gravitational field strength	$g = 9.81 \text{ N kg}^{-1}$	(close to Earth's surface)
Permittivity of free space	$\epsilon_0 = 8.85 \times 10^{-12} \text{ F m}^{-1}$	
Planck constant	$h = 6.63 \times 10^{-34} \text{ J s}$	
Proton mass	$m_p = 1.67 \times 10^{-27} \text{ kg}$	
Speed of light in a vacuum	$c = 3.00 \times 10^8 \text{ m s}^{-1}$	
Stefan-Boltzmann constant	$\sigma = 5.67 \times 10^{-8} \text{ W m}^{-2} \text{ K}^{-4}$	
Unified atomic mass unit	$u = 1.66 \times 10^{-27} \text{ kg}$	

Mechanics

Kinematic equations of motion

$$s = \frac{(u + v)t}{2}$$

$$v = u + at$$

$$s = ut + \frac{1}{2}at^2$$

$$v^2 = u^2 + 2as$$

Forces

$$\Sigma F = ma$$

$$g = \frac{F}{m}$$

$$W = mg$$

$$\text{moment of force} = Fx$$

Momentum

$$p = mv$$

Work, energy and power

$$\Delta W = F\Delta s$$

$$E_k = \frac{1}{2}mv^2$$

$$\Delta E_{\text{grav}} = mg\Delta h$$

$$P = \frac{E}{t}$$

$$P = \frac{W}{t}$$

$$\text{efficiency} = \frac{\text{useful energy output}}{\text{total energy input}}$$

$$\text{efficiency} = \frac{\text{useful power output}}{\text{total power input}}$$



Electric circuits

Potential difference

$$V = \frac{W}{Q}$$

Resistance

$$R = \frac{V}{I}$$

Electrical power and energy

$$P = VI$$

$$P = I^2R$$

$$P = \frac{V^2}{R}$$

$$W = VIt$$

Resistivity

$$R = \frac{\rho l}{A}$$

Current

$$I = \frac{\Delta Q}{\Delta t}$$

$$I = nqvA$$

Materials

Density

$$\rho = \frac{m}{V}$$

Stokes' law

$$F = 6\pi\eta rv$$

Hooke's law

$$\Delta F = k\Delta x$$

Young modulus

$$\text{Stress } \sigma = \frac{F}{A}$$

$$\text{Strain } \varepsilon = \frac{\Delta x}{x}$$

$$E = \frac{\sigma}{\varepsilon}$$

Elastic strain energy

$$\Delta E_{\text{el}} = \frac{1}{2}F\Delta x$$

Waves and particle nature of light

Wave speed

$$v = f\lambda$$

Speed of a transverse wave on a string

$$v = \sqrt{\frac{T}{\mu}}$$

Intensity of radiation

$$I = \frac{P}{A}$$

Power of a lens

$$P = \frac{1}{f}$$

$$P = P_1 + P_2 + P_3 + \dots$$

Thin lens equation

$$\frac{1}{u} + \frac{1}{v} = \frac{1}{f}$$

Magnification for a lens

$$m = \frac{\text{image height}}{\text{object height}} = \frac{v}{u}$$

Diffraction grating

$$n\lambda = d \sin \theta$$

Refractive index

$$n_1 \sin \theta_1 = n_2 \sin \theta_2$$

$$n = \frac{c}{v}$$

Critical angle

$$\sin C = \frac{1}{n}$$

Photon model

$$E = hf$$

Einstein's photoelectric equation

$$hf = \phi + \frac{1}{2}mv_{\text{max}}^2$$

de Broglie wavelength

$$\lambda = \frac{h}{p}$$

DO NOT WRITE IN THIS AREA

DO NOT WRITE IN THIS AREA

DO NOT WRITE IN THIS AREA



Further mechanics

Impulse

$$F\Delta t = \Delta p$$

Kinetic energy of a non-relativistic particle

$$E_k = \frac{p^2}{2m}$$

Motion in a circle

$$v = \omega r$$

$$T = \frac{2\pi}{\omega}$$

$$F = ma = \frac{mv^2}{r}$$

$$a = \frac{v^2}{r}$$

$$a = r\omega^2$$

$$F = mr\omega^2$$

Fields

Coulomb's law

$$F = \frac{Q_1 Q_2}{4\pi\epsilon_0 r^2}$$

Electric field strength

$$E = \frac{F}{Q}$$

$$E = \frac{Q}{4\pi\epsilon_0 r^2}$$

$$E = \frac{V}{d}$$

Electric potential

$$V = \frac{Q}{4\pi\epsilon_0 r}$$

Capacitance

$$C = \frac{Q}{V}$$

Energy stored in a capacitor

$$W = \frac{1}{2} QV$$

$$W = \frac{1}{2} CV^2$$

$$W = \frac{1}{2} \frac{Q^2}{C}$$

Capacitor discharge

$$Q = Q_0 e^{-t/RC}$$

$$I = I_0 e^{-t/RC}$$

$$V = V_0 e^{-t/RC}$$

$$\ln Q = \ln Q_0 - \frac{t}{RC}$$

$$\ln I = \ln I_0 - \frac{t}{RC}$$

$$\ln V = \ln V_0 - \frac{t}{RC}$$

In a magnetic field

$$F = BIl \sin \theta$$

$$F = Bqv \sin \theta$$

Faraday's and Lenz's laws

$$\mathcal{E} = \frac{-d(N\phi)}{dt}$$

Root-mean-square values

$$V_{\text{rms}} = \frac{V_0}{\sqrt{2}}$$

$$I_{\text{rms}} = \frac{I_0}{\sqrt{2}}$$

Nuclear and particle physics

In a magnetic field

$$r = \frac{p}{BQ}$$

Thermodynamics

Heating

$$\Delta E = mc\Delta\theta$$

$$\Delta E = L\Delta m$$

Molecular kinetic theory

$$\frac{1}{2}m\langle c^2 \rangle = \frac{3}{2}kT$$

$$pV = \frac{1}{3}Nm\langle c^2 \rangle$$

Ideal gas equation

$$pV = NkT$$

Stefan-Boltzmann law

$$L = \sigma AT^4$$

$$L = 4\pi r^2 \sigma T^4$$

Wien's law

$$\lambda_{\max} T = 2.898 \times 10^{-3} \text{ m K}$$

Space

Intensity

$$I = \frac{L}{4\pi d^2}$$

Redshift of electromagnetic radiation

$$z = \frac{\Delta\lambda}{\lambda} \approx \frac{\Delta f}{f} \approx \frac{v}{c}$$

Cosmological expansion

$$v = H_0 d$$

Nuclear radiation

Mass-energy

$$\Delta E = c^2 \Delta m$$

Radioactive decay

$$A = \lambda N$$

$$\frac{dN}{dt} = -\lambda N$$

$$\lambda = \frac{\ln 2}{t_{1/2}}$$

$$N = N_0 e^{-\lambda t}$$

$$A = A_0 e^{-\lambda t}$$

Gravitational fields

Gravitational force

$$F = \frac{Gm_1 m_2}{r^2}$$

Gravitational field strength

$$g = \frac{Gm}{r^2}$$

Gravitational potential

$$V_{\text{grav}} = \frac{-Gm}{r}$$

Oscillations

Simple harmonic motion

$$F = -kx$$

$$a = -\omega^2 x$$

$$x = A \cos \omega t$$

$$v = -A\omega \sin \omega t$$

$$a = -A\omega^2 \cos \omega t$$

$$T = \frac{1}{f} = \frac{2\pi}{\omega}$$

$$\omega = 2\pi f$$

Simple harmonic oscillator

$$T = 2\pi \sqrt{\frac{m}{k}}$$

$$T = 2\pi \sqrt{\frac{l}{g}}$$

